

FOR LEASE

MEDICAL & OFFICE



HUNTINGTON GALLERIA

4636 Calgary Trail, Edmonton, AB

PROPERTY DESCRIPTION

Second floor units are available for lease in Huntington Galleria, a vibrant retail and professional centre on Calgary Trail, seeing over 79,600 VPD.

Large windows, exceptional building signage and ample paved parking characterize the building.

The second floor has common washrooms and is accessed via elevator or stairwell. Reserved parking is available.

- The main floor unit is LEASED.
- **The east-facing second-floor unit is built out with a reception/waiting area, open workstations, private offices, meeting rooms, a kitchenette, a print room, and a storage/mechanical room.**

MARKET
PER SQFT

2nd FLOOR
IMMEDIATE POSSESSION

\$16.32 (+/-)
2ND FLOOR OP COSTS

RE/MAX
COMMERCIAL
RE/MAX EXCELLENCE
COMMERCIAL DIVISION

ALEXANDRIA WIEMER, Senior Associate | New Development Sales & Leasing

 (587) 635 4203

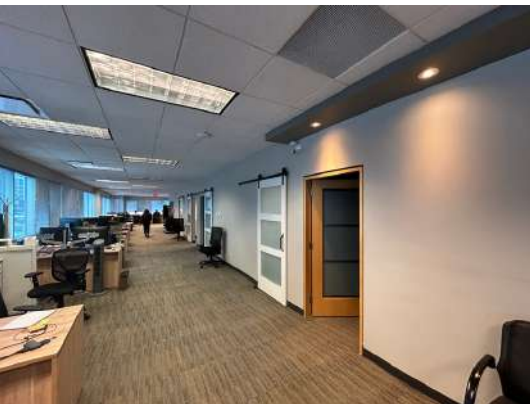
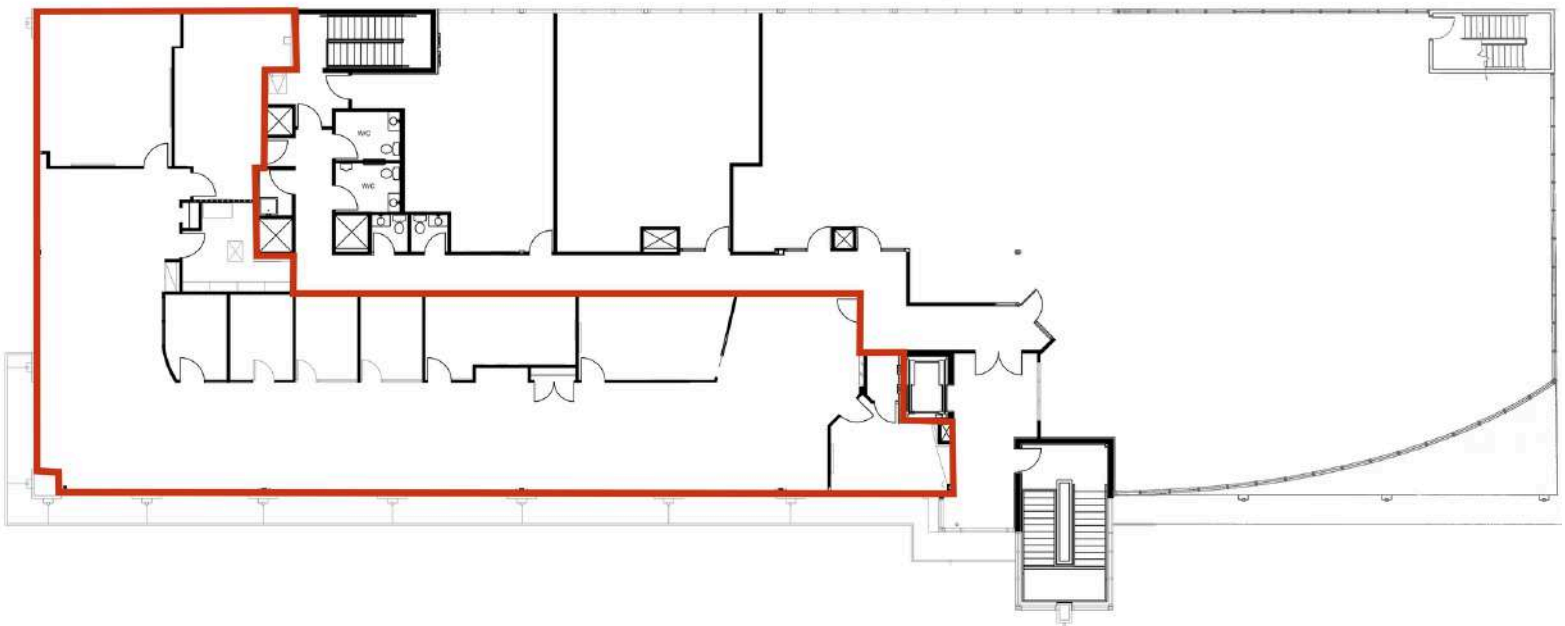
 alex@commercialyeg.ca

SECOND FLOOR

± 4,409 SF

Availability: IMMEDIATE

**plus Tenant's proportionate share of any common areas of the Building.



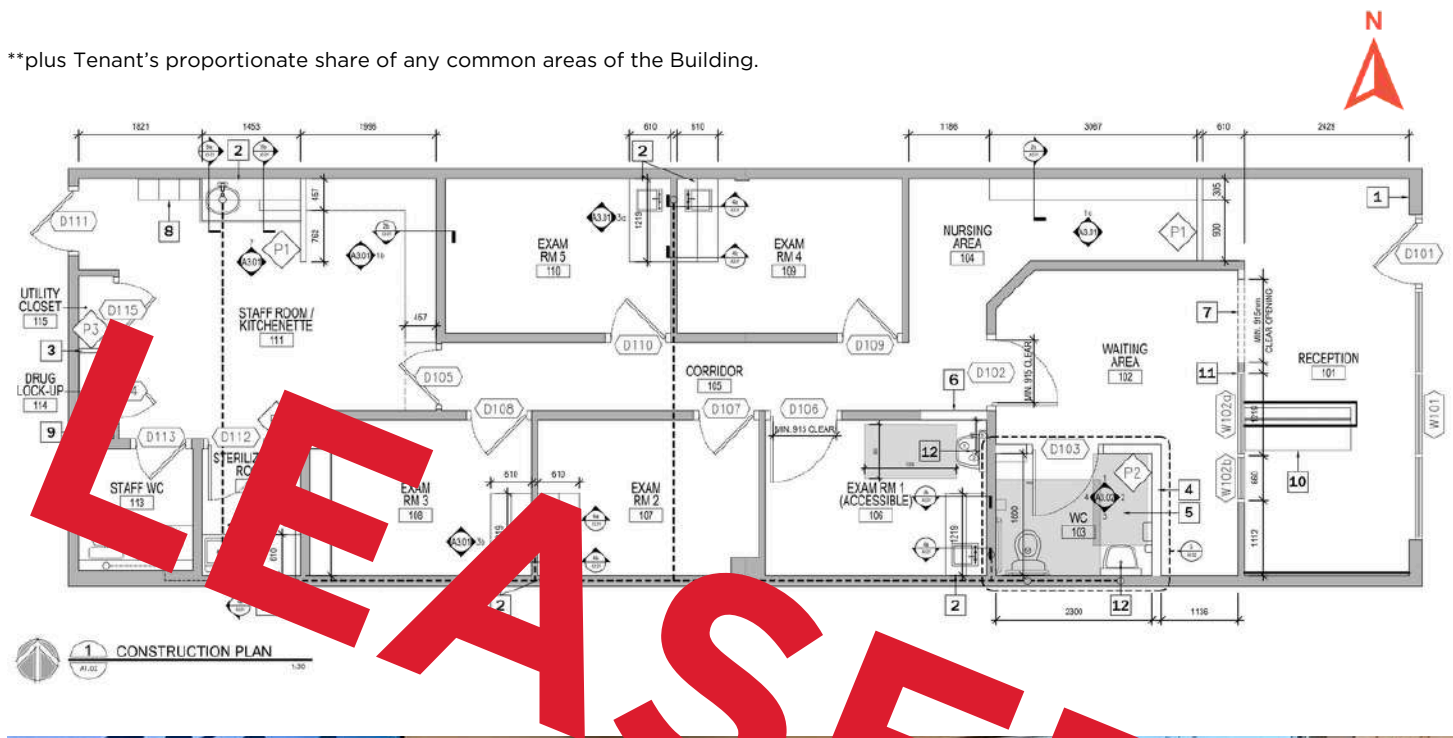
MAIN FLOOR

1,284 SF

Availability: LEASED

LEASED

**plus Tenant's proportionate share of any common areas of the Building.





CONTACT:

ALEXANDRIA WIEMER

Senior Associate | New Development Sales & Leasing

☎ (587) 635 4203

✉ alex@commercialyeg.ca



201, 5607 - 199 Street , Edmonton, AB T6M 0M8 | commercialyeg.ca

This brochure is for general informational purposes only. No warranty is made regarding the accuracy of the information, which is subject to errors, omissions, price changes, and withdrawal without notice. The information contained herein was obtained from sources deemed to be reliable and is believed to be true; it has not been verified, and as such, cannot be warranted nor form a part of any future contract. All measurements should be independently verified by the Purchaser/Tenant. RE/MAX Excellence Commercial Division office is independently owned and operated, and shall not be held liable for any loss and damages arising from information provided in this brochure. Stats are subject to change; please call for more information.