



**FOR SALE**

**\$1,499,900**

## FULL SERVICE GENERAL CONTRACTING BUSINESS

Multi-billion dollar sector for Alberta - providing thousand of jobs.

This company provides comprehensive pre-construction and design-build services, focusing on design, value engineering, scheduling, and accurate pricing. Their expertise spans site analysis, hazard and risk assessments, permit navigation, and procurement management.

They oversee all aspects of a project, managing client expectations through design meetings, construction administration, labour coordination, site safety, quality control, and communication with all stakeholders. By handling both design and construction, including subcontractors and special trades, they implement a fast-track approach that saves time and reduces costs.

The director is open to partnership opportunities, collaborating with developers, investors, and other stakeholders to deliver efficient, high-quality construction solutions.

Employees		
	Senior Superintendent	1 Year
	Chief Estimator/Pre-Construction	1 Year
	Safety Administrator	5 Years
	Chief Operating Officer	1 Year
	Junior Superintendent	2 Years

Executive Assistant	1 Year
Project Accountant	1 Year
Project Manager	2 Years
Project Manager (2)	1 Year

\*All employees have previous years experience with other firms.

# COMPANY DETAILS

Focus	New Commercial, Light Industrial, Leasehold Improvements, Multi-Family & Industry performing Interior Renovations.
Location	Edmonton, Alberta
Established	2020
2025/2026 Work	<b>In Progress:</b> 2 Commercial Residential Supportive Housing, Community Bldg, 2 Storey 6 Plex Affordable Infill, 6 Plex 2 Storey Affordable Housing, 8 Plex Affordable Housing
Gross Value	\$4.2M + \$1M + \$1.3M + \$1.6M = <b>\$8.1M</b>
Stipulated Bids	Provides Complete Bids based on Qualifications & Price
Special Services	Provides Complete Turn-Key Solutions for Interior and Exterior Renovations for Multi-Family Rental Market. Hazardous Remediation, Demolition, Exterior Building Envelope Systems, Vapour/Air Barriers, EFIS, Deck Coating, Siding Material.

Sale	Asset
Client Payment Structure	20% Down payment Progressive billing.
Familiarization	Six Months +/- or alternate Arrangements to be made.
Lease Details	June 1 <sup>st</sup> 2025 to May 31 <sup>st</sup> 2026: \$3,710.19 <b>Base:</b> \$7.75 <b>Additional Rent:</b> \$4.60 plus GST Option to Renew





# AFFILIATIONS | MEMBERSHIPS



Alberta Construction  
Safety Association



EDMONTON  
CONSTRUCTION  
ASSOCIATION



## CONTACT:

### MELODY AARON

Associate

📞 (780) 818-9710

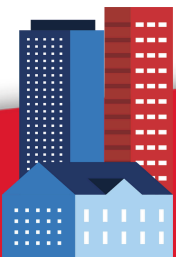
✉️ [melody@aaronrealestategroup.ca](mailto:melody@aaronrealestategroup.ca)

### JUDITH RIMMER

Vice President | Investments - Multifamily, Land, & Business Sales

📞 (780) 405.9333

✉️ [jrimmer@commercialyeg.ca](mailto:jrimmer@commercialyeg.ca)



This brochure is for general information only. While sourced from believed-to-be reliable materials, its accuracy is not guaranteed and is subject to errors, omissions, price changes, or withdrawal without notice. Information should not be relied upon without independent verification. All measurements must be confirmed by the Purchaser/Tenant. RE/MAX Excellence Commercial Division is independently owned and operated and assumes no liability for any loss or damages arising from the information provided. RE/MAX Excellence Commercial Division, 201, 5607-199 Street, Edmonton, AB T6M 0M8, [commercialyeg.ca](http://commercialyeg.ca).