



# SWEET RETAIL OPPORTUNITY

Sherwood Park, Alberta

**RE/MAX Excellence Commercial Division is pleased to present an exciting retail opportunity in the heart of Sherwood Park.**

Strategically positioned within a vibrant community and surrounded by schools, daycares, and high-traffic amenities, this charming confectionery shop enjoys strong local visibility and customer engagement.

Known for its curated selection of authentic imported candies, specialty beverages, and unique gift items, the business has quickly built a loyal customer base and solid reputation within just a few months of operation. This turnkey retail space is ideally suited for first-time buyers or passionate entrepreneurs seeking an accessible and community-driven business venture.

With an inviting storefront, excellent location, and growing brand recognition, this opportunity offers a rare blend of lifestyle, profitability, and scalability.

To proceed and receive full confidential business details, interested parties are required to sign a Non-Disclosure Agreement (NDA).

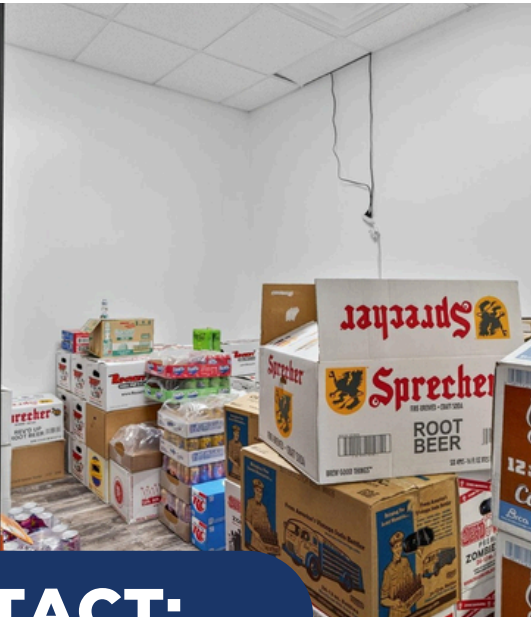
**RE/MAX**  
COMMERCIAL  
RE/MAX EXCELLENCE  
COMMERCIAL DIVISION

**MONIKA NIJHAWAN**, Associate

(780) 906 2941

monikayeg@gmail.com





## CONTACT:

**MONIKA NIJHAWAN**

Associate

📞 (780) 906 2941

✉️ monikayeg@gmail.com



This brochure is for general information only. While sourced from believed-to-be reliable materials, its accuracy is not guaranteed and is subject to errors, omissions, price changes, or withdrawal without notice. Information should not be relied upon without independent verification. All measurements must be confirmed by the Purchaser/Tenant. RE/MAX Excellence Commercial Division is independently owned and operated and assumes no liability for any loss or damages arising from the information provided. RE/MAX Excellence Commercial Division, 201, 5607-199 Street, Edmonton, AB T6M 0M8, [commercialveg.ca](http://commercialveg.ca).