



# CHAPPELLE SQUARE

6416 Cartmell Place SW, Edmonton

Two (2) main-floor and, one first-floor commercial units, are available for sale immediately. This 65000 square feet plus Plaza (Chappelle Square) is located in one of the fastest growing communities of Chappelle in South West Edmonton. The zoning (CB2) allows a variety of retail and office uses.

Two main floor units available for sale are: 6448 (2877 SF +/-) and 6486 Cartmell PI SW (1200 SF +/-). The first floor has one unit- 206, 6450 Cartmell Place SW (around 1200 SF +/-). The leasing option also exists on these units. The units have wide front windows, double glass doors, front parking (Scrambled) and, an 18-foot clear ceiling.

## Existing Businesses in the plaza include:

- Daycare
- Medical Clinic
- Physio, Chiro, Massage
- Restaurants (Indian, Pizza)
- General Dentist
- Car wash
- Pub and Bar etc.

Municipal Address	<b>Main Floor Units:</b> 6448 Cartmell Place SW (2877 SF +/-) and 6486 Cartmell Place SW (1200 SF +/- )
	<b>First Floor Unit:</b> 6450 Cartmell Place SW (1200 SF +/- )
Zoning	CB2
Sale Price	Main Floor starting at \$545 PSF First Floor at \$500 PSF
Base Rent	Main Floor starting at \$38 PSF First Floor at \$30 PSF
OP Costs	\$8 PSF (Excludes Property Taxes)

**RE/MAX**  
COMMERCIAL®  
RE/MAX EXCELLENCE  
COMMERCIAL DIVISION

**RAVI THAKUR, MBA, ACP,** Vice President | Retail Sales & Leasing, New Developments

(780) 994 1646

ravi.thakur@commercialyeg.ca



# PROPERTY DETAILS



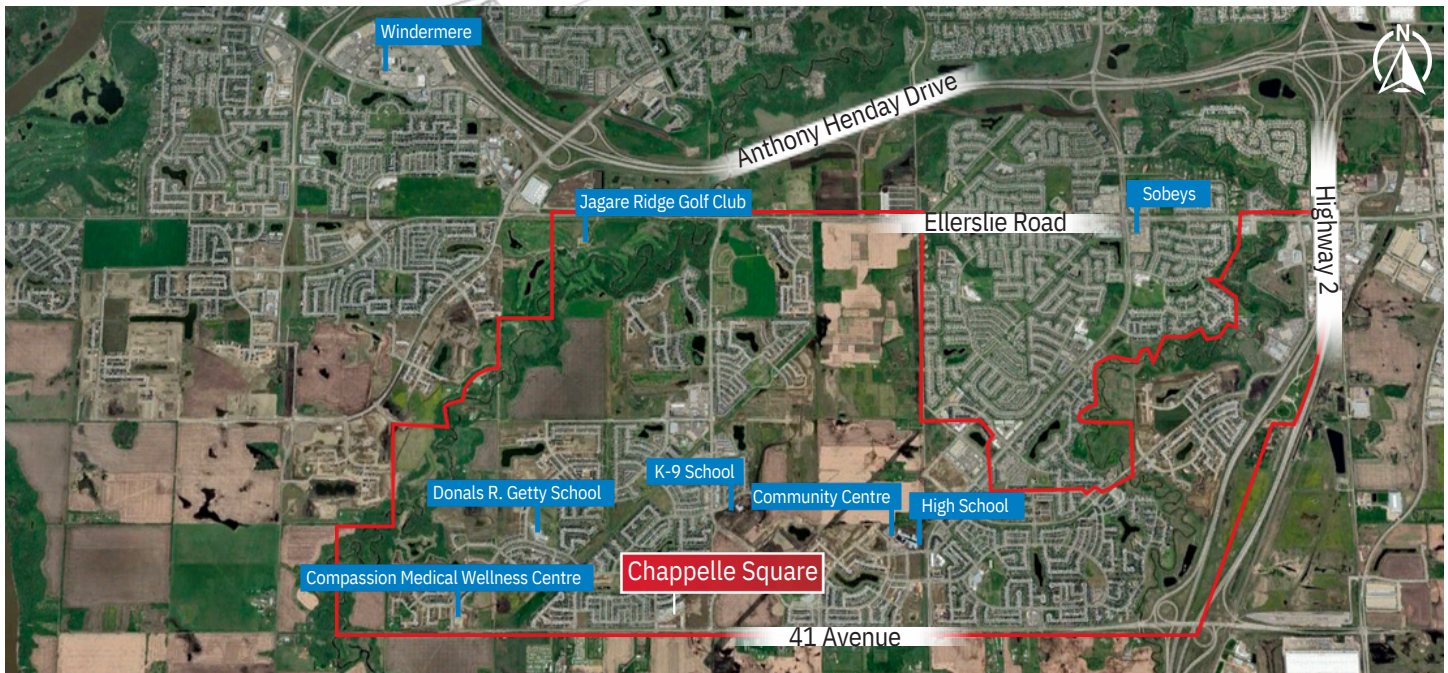
## INCOME

Individual: \$59.6k  
Family: \$119.0k



## POPULATION

26,948  
Heritage Valley Area\*  
\*See red line on map below



## CONTACT:

### RAVI THAKUR, MBA, ACP

Vice President | Retail Sales & Leasing, New Developments

(780) 994 1646

ravi.thakur@commercialyeg.ca



201, 5607 - 199 Street, Edmonton, AB T6M 0M8 | commercialyeg.ca

This brochure is for general informational purposes only. No warranty is made regarding the accuracy of the information, which is subject to errors, omissions, price changes, and withdrawal without notice. The information contained herein was obtained from sources deemed to be reliable and is believed to be true; it has not been verified, and as such, cannot be warranted nor form a part of any future contract. All measurements should be independently verified by the Purchaser/Tenant. RE/MAX Excellence Commercial Division office is independently owned and operated, and shall not be held liable for any loss and damages arising from information provided in this brochure. Statistics source: locallogic.co as of January 2025 & Federal Census 2021 by City of Edmonton. Stats are subject to change; please call for more information.